

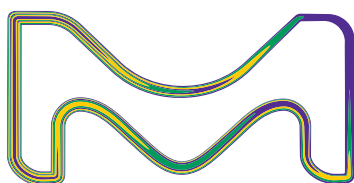
spectrophotometers and test kits

Spectroquant[®]Prove for accurate and convenient water, beverage &

**Get a new
Prove for \$1!**

Details back page

T's & C's Apply*



Your Local Distributor:

Lab Supply Ltd

P: 0800 522 787

E: info@labsupply.co.nz

W: www.labsupply.co.nz



spectroquant® prove

As your trusted analytical partner, we built the perfect tool for water analysis, one that unites the simplicity you want with the confidence you need, and the durability you expect. Spectroquant® Prove delivers all this and more. Its intuitive design and our comprehensive portfolio of Spectroquant® test kits make analysis smoother than ever and support you throughout your workflow.

Long-life Lamp

Extended durability and economy

The new reference beam technology in our Spectroquant® Prove instruments minimizes the effort and costs of replacing lamps. Hence, the halogen lamp in the Prove 100 lasts significantly longer, while the special xenon lamp in the Prove 300 and 600 offers a lifetime of several years combined with the flexibility of UV/Vis analysis - even under intense use.

Smart Screen

Simple, seamless menu navigation

Have complete control at your fingertips with our interactive Smart Screen and intuitive icons.

- Method and result lists for easy documentation and data access
- Touchscreen is resistant to most chemicals
- System menu in 28 built-in languages

Custom Measurements

Easy adjustments for every need

Several modifications can be made easily using the settings icon, for example:

- Simultaneous display of absorption and concentration values
- Turbidity correction
- Add the dilution factor for each sample

[SigmaAldrich.com/prove](https://www.sigmaaldrich.com/prove)

Individualized Measuring Ranges

Set your own individual ranges:

- Monitor results within specified limits
- Visualize expected ranges
- Simplify your trend analysis



Data Exchange

Fast and flexible connectivity

You have multiple ways to easily utilize your data:

- USB and Ethernet port - to connect your printer or memory device
- "Prove Connect to LIMS" allows you to push your results directly to your LIMS or ELN (Cat.No. Y1100860001)

More information on

SigmaAldrich.com/proveconnect

Ready-to-use Test Chemistry

Maximum flexibility

Every Prove model accepts 16 mm round cells as well as 10, 20 and 50 mm rectangular cells (cuvettes). For even greater sensitivity, the Prove 600 is compatible with 100 mm pathlength cells.



Minimal effort

The Prove cell test port offers direct insertion of our ready-to-use round cell tests without opening any lids. The Live ID barcode identifies the correct method instantaneously.

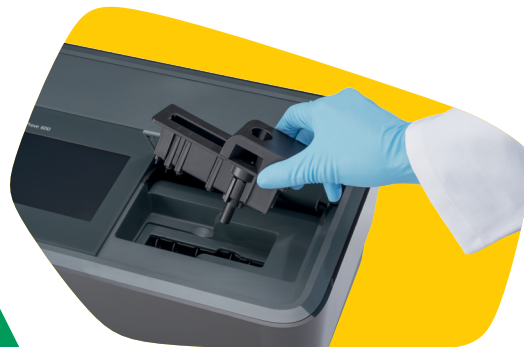
Our innovative AutoSelector technology means that your reagent testing will be precise and consistent. It recognizes the cell size, detects the analysis method and calculates the results based on the cell size.



Easy Cleaning

Durable, removable components

The intelligent design makes it easy to keep your Spectroquant® Prove in top form – even if something is spilled into the sample compartment. Simply remove the cell holder, rinse it with water, wipe it clean, and it's ready for your next analysis.



Compact

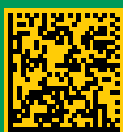
Dimensions: W 42 cm, D 28 cm, H 24 cm

Accuracy and precision Made simple

Live ID

A new dimension in traceability

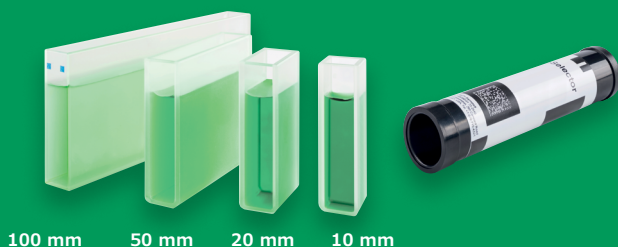
Live ID is an identification system for all our cell and reagent tests. Unlike other barcodes, it transfers “live” data—thanks to automatic calibration updates, meaning that your results will always be accurate and fully traceable. Live ID also saves time; just insert the test, and your Prove instrument reads the code, detects the method, and selects the right settings. Test-specific lot and expiry data are saved with each result for accurate records and streamlined audits.



- Method recognition
- Lot number
- Expiry date
- Calibration update

Reagent Tests with AutoSelector

These economical kits contain highly stable reagent mixtures, and allow you to choose the cell format that suits your measuring range. An AutoSelector with a Live ID barcode is provided with each reagent test kit for accurate measurements.



100 mm 50 mm 20 mm 10 mm



Cell Tests

For maximum convenience, our cell tests include all the reagents you need for your analysis, so they are ready to use straight out of the box.



Spectroquant® Test Kits

**Not just more choices.
More confidence.**

Spectroquant® Prove is preprogrammed for over 180 Spectroquant® test kits and methods, giving you swift, reliable results for the broadest range of applications.

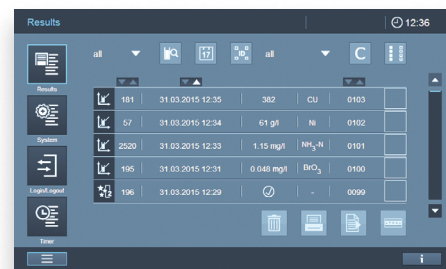
[SigmaAldrich.com/test-kits](https://www.sigmaldrich.com/test-kits)



Data on Demand

Customizable data for easy documentation

- Enjoy maximum flexibility in minimum steps
- Access all your results from a clear, concise list
- Select your desired filter option (by date, keyword, method, user, etc.)
- Export data in your preferred form – from brief overview to complete protocol



Sample ID	Date	Time	Concentration	Method
181	31.03.2015	12:35	382	CU
67	31.03.2015	12:34	61 g/l	NI
2520	31.03.2015	12:33	1.15 mg/l	NH ₄ -N
195	31.03.2015	12:31	0.048 mg/l	BrO ₃
196	31.03.2015	12:29	-	0099

AQA Prime

A new level of analytical standard

AQA Prime makes analytical quality assurance exceptionally reliable – and extremely easy.

- Clear overview of AQA status, information, updates, and options with one touch
- Select individual settings and measurements for each AQA
- Complete verification and documentation for all stages of quality control:

AQA1 > Instrument check

AQA2 > System check – now even easier because Spectroquant® Prove is preprogrammed for all Spectroquant® standards SigmaAldrich.com/wfa-crm-standards



AQA1



AQA2



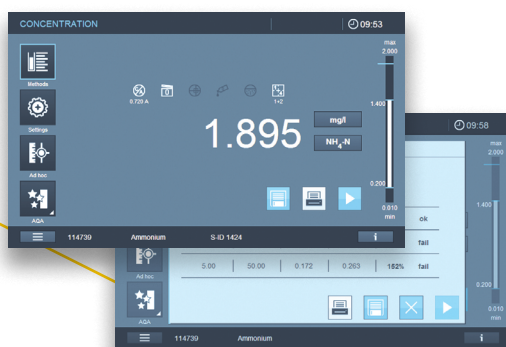
AQA1 activated



AQA2 activated



Pipette Check



Matrix Check

Easily detect interferences

The Matrix Check makes it even easier to spot foreign substances in your samples. After your measurement, simply press the Settings icon, and select Matrix Check from the list. You will be clearly guided through the entire process.

Preprogrammed Applications

Free, additional methods to simplify your work

To further facilitate your analysis, Spectroquant® Prove offers free, preprogrammed application procedures, such as bromate in drinking water, ICUMSA and brewery methods.

SigmaAldrich.com/wfa-applications

Robust Surfaces

Built to endure lab chemicals

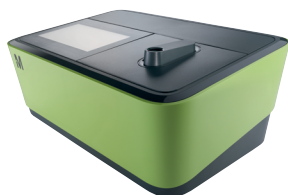
Spills and splashes happen no matter how careful you are. That's why the materials and design of Spectroquant® Prove are engineered to last and be resistant to most chemicals used in labs.

spectroquant® prove

100 | 300 | 600

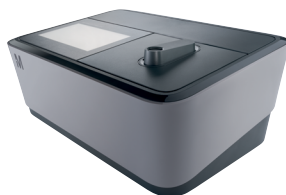
Spectroquant® Prove 100

Cat. No. 1.73016.0001



Spectroquant® Prove 300

Cat. No. 1.73017.0001



Spectroquant® Prove 600

Cat. No. 1.73018.0001



For routine applications

The Prove 100 is the best choice for those who primarily use our broad range of Spectroquant® test kits, or only perform Vis measurements. High quality and great value for your daily analyses.

For sensitive measurements

Thanks to its long-lasting xenon lamp, the Prove 300 is ideal for more intensive use. What's more, it is capable of both UV and Vis measurements, so you have greater flexibility for more intricate analyses.

For complex analyses

Designed with high-end UV/Vis optics, and cuvettes of up to 100 mm, the Prove 600 packs great power into a compact size. Excellent resolution and sensitivity for complex kinetics or spectral measurements, or for use with test kits.

Specifications

		Prove 100	Prove 300	Prove 600
Measuring technology	Spectrophotometer with reference beam technology	■	■	■
Wavelength range	Vis (320 – 1,100 nm)	■	■	■
	UV (190 – 320 nm)		■	■
Lamp type	Tungsten halogen lamp	■		
	Xenon flash lamp		■	■
Ambient light protection	Measurement with open shaft possible due to proprietary solution (patent pending)	■	■	■
Spectral bandwidth	4 nm	■	■	
	1.8 nm			■
Smart Screen Display	Resistive touchscreen	■	■	
	P-cap glass touchscreen			■
Live ID System	2-D Barcode recognition for cell tests and reagent tests	■	■	■
	Barcode contains lot, expiry, and calibration data; data stored with each measurement	■	■	■
Cell size	16 mm round cells, 10, 20 and 50 mm rectangular cells with automatic recognition	■	■	■
	100 mm rectangular cells with automatic recognition			■

Specifications

		Prove 100	Prove 300	Prove 600
Cell holder	Removable for easy cleaning	■	■	■
Methods	Programmed methods of all Spectroquant® cell and reagent tests, 99 user-defined methods, 20 profiles for kinetics and absorbance scans	■	■	■
Applications	Free preprogrammed applications: Bromate, Brewery packages (MEBAK/EBC methods), Sugar (ICUMSA), Oil (DOBI, olive oil)	■	■	■
AQA Prime	Individual settings for all methods in AQA 1 (instrument check) and AQA 2 mode (system check) and pipette check	■	■	■
Sample matrix check	Instrument-supported matrix check for each method	■	■	■
Software updates	Free method updates on the MilliporeSigma website	■	■	■
Languages	Navigation in 28 built-in languages	■	■	■
Communication interfaces	USB: 2 x USB-A (for printer, USB memory devices, keyboard or barcode reader), 1 x USB-B; Ethernet: LAN connection	■	■	■

Application fields



Wastewater



The Prove 100 is the perfect choice for routine Vis measurements. Add your wastewater sample to the cuvette or cell, then insert and read your results. The Spectroquant® portfolio offers a broad selection of COD and other test kits in multiple measuring ranges.



Drinking water & beverages



The analysis of drinking water and beverages typically involves reagent tests since they offer lower detection limits for parameters such as manganese and sulfate. The Prove 300 is ideal here, as it allows UV/Vis analyses, and is preprogrammed with free applications, like bromate and brewery tests.



Process water



Even low levels of impurities in process water can lead to damage, downtime, and expensive repairs. To help you avoid these, we have developed the most sensitive silicate and chloride tests with the lowest measuring ranges in the market. For even greater sensitivity, use the 100 mm cell in the Prove 600.

Application notes

Our photometric application notes demonstrate a broad range of methods to support your production and analysis. Whether you need to determine COD in wastewater, the level of nitrate in soils or the concentration of bromate in your drinking water - over 200 application notes support your sample preparation and analysis.

Get the right application for all your analytical needs from [SigmaAldrich.com/wfa-applications](https://www.sigmaaldrich.com/wfa-applications).

Compliance, always ensured.

At Merck, we understand the importance of reliable instruments, and the complexities of documentation. That's why we offer a comprehensive service plan that takes care of both.

All Spectroquant® service plans offer the following features:

- **Performance check** with reference materials — certificate included
- **Factory-recommended maintenance** to prevent breakdowns
- **Telephone support hotline** connects you to our technical experts
- **Free software upgrades** to keep your instrument up-to-date
- **Reagent delivery program** for convenient, punctual supply of our high-quality test kits

Contact us for your personalized Spectroquant® service plan today: [SigmaAldrich.com/prove](https://www.sigmaaldrich.com/prove)

Supelco®

Analytical Products

Merck KGaA
Frankfurter Str. 250
64293 Darmstadt
Germany

SigmaAldrich.com/prove

Spec-tacular Savings are here!

Get the full spectrum of savings with our Spectroquant® Prove bundles.

Get all the precision and budget-saving benefits of the Spectroquant® Prove and compatible test kits in one convenient bundle. The more test kits you buy, the bigger the discount on your new Prove unit - you could get yours for \$1!*

Find out how to take advantage of this spec-tacular offer today!

For a full list of included Spectroquant® tests, get your copy of the WFA Catalogue today:

SigmaAldrich.com/WFA-catalog

To find out more, contact your Local Distributor:

Lab Supply Ltd

P: 0800 522 787

E: info@labsupply.co.nz

W: www.labsupply.co.nz



*Terms & Conditions:

Offer Valid until 31st December 2023 to Australia and New Zealand customers only.

Prove unit discount is based on the consumable order value of Spectroquant® test kits, placed via standing order or single purchase order. Qualifying consumable value for Prove unit discount differs based on Prove model (100, 300, 600).

Customer is required to order a Prove unit and qualifying consumables in the same order.

Consumable order value is based on standard list prices.

Maximum discount available \$1 ex-GST for Prove 100, 300, or 600 models.

We provide information and advice to our customers to the best of our knowledge and ability, but without obligation or liability. Existing laws and regulations are to be observed in all cases by our customers. This also applies in respect to any rights of third parties. Our information and advice do not relieve our customers of their own responsibility for checking the suitability of our products for the envisaged purpose.